

How to use CAD models from SamacSys

Our “Green” Icons



There are 2 main ways to use our Symbols, Footprints and 3D models

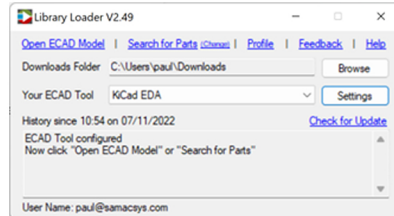
Option 1#



Library Loader : * Automatically loads models into your library and attaches them to your cursor ready for placement.

- 1 Download and Install Library Loader from <https://componentsearchengine.com/LibraryLoader.php>
- 2 Launch Library Loader from the desktop shortcut.
- 3 Register or Login with your <https://componentsearchengine.com> account credentials.

- 4 Choose your ECAD Tool and click Settings to configure. On the configuration screen you will see a Help link to provide more instructions on setting up Library Loader for your ECAD tool.



- 5 Visit <https://componentsearchengine.com> or any partner websites featuring our green icons.
- 6 Download ECAD model.
- 7 Library Loader will process the downloaded zip for your ECAD tool as per the instructional help.

Option 2#



Download Zip file

- 1 Visit <https://componentsearchengine.com> or any partner websites featuring our green icons.
- 2 Download ECAD model.
- 3 * Extract the library file(s) for your ECAD tool.
- 4 Open or Import library file(s).

* ECAD Tool dependant